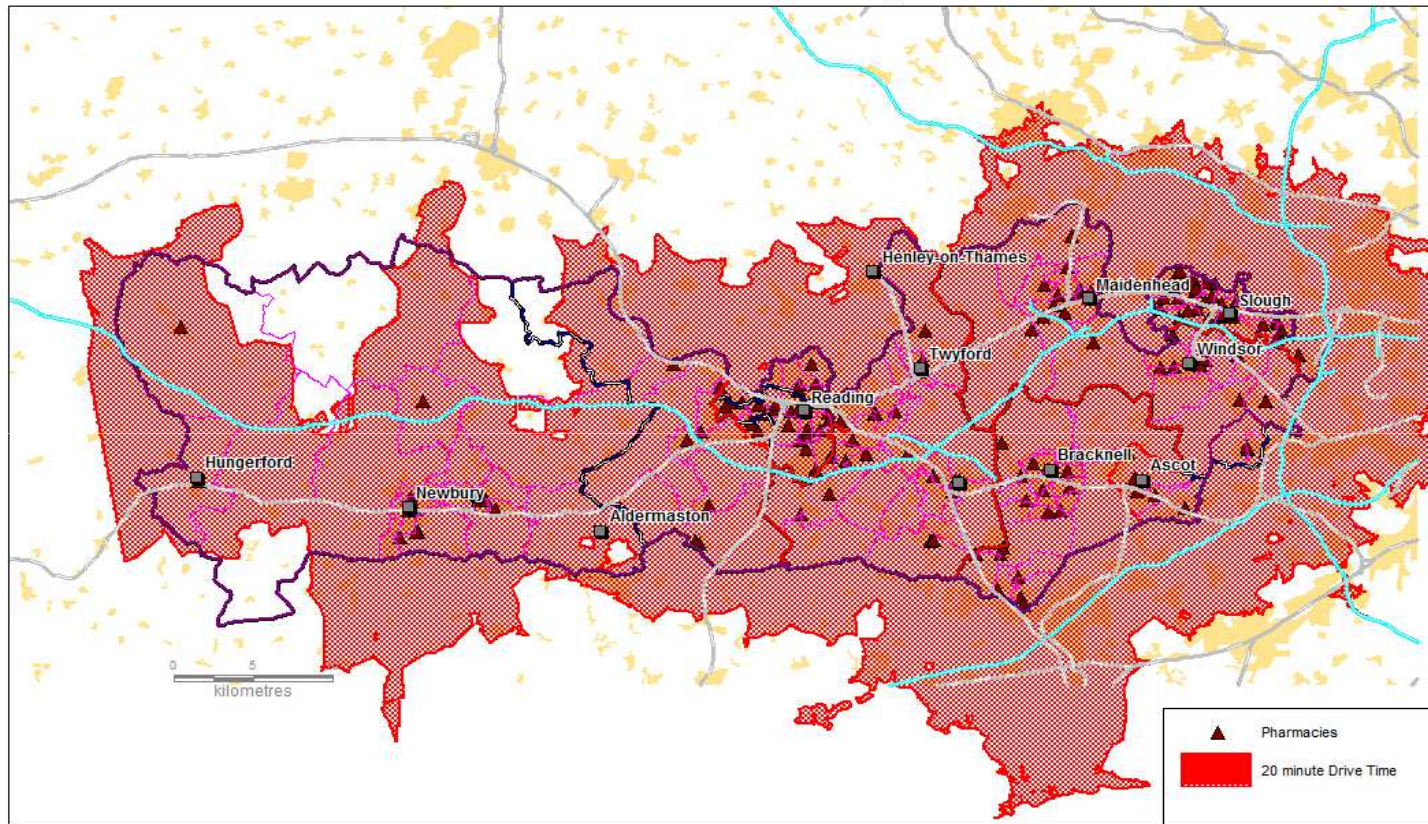


# Neighbouring PNAs

- Each HWB board must consult its neighbours on its PNA .
- This is part of the local consultation plan
- This presentation summarises the key messages in the neighbouring areas

# Other Berkshire PNAs

## Berkshire - Pharmacy Access



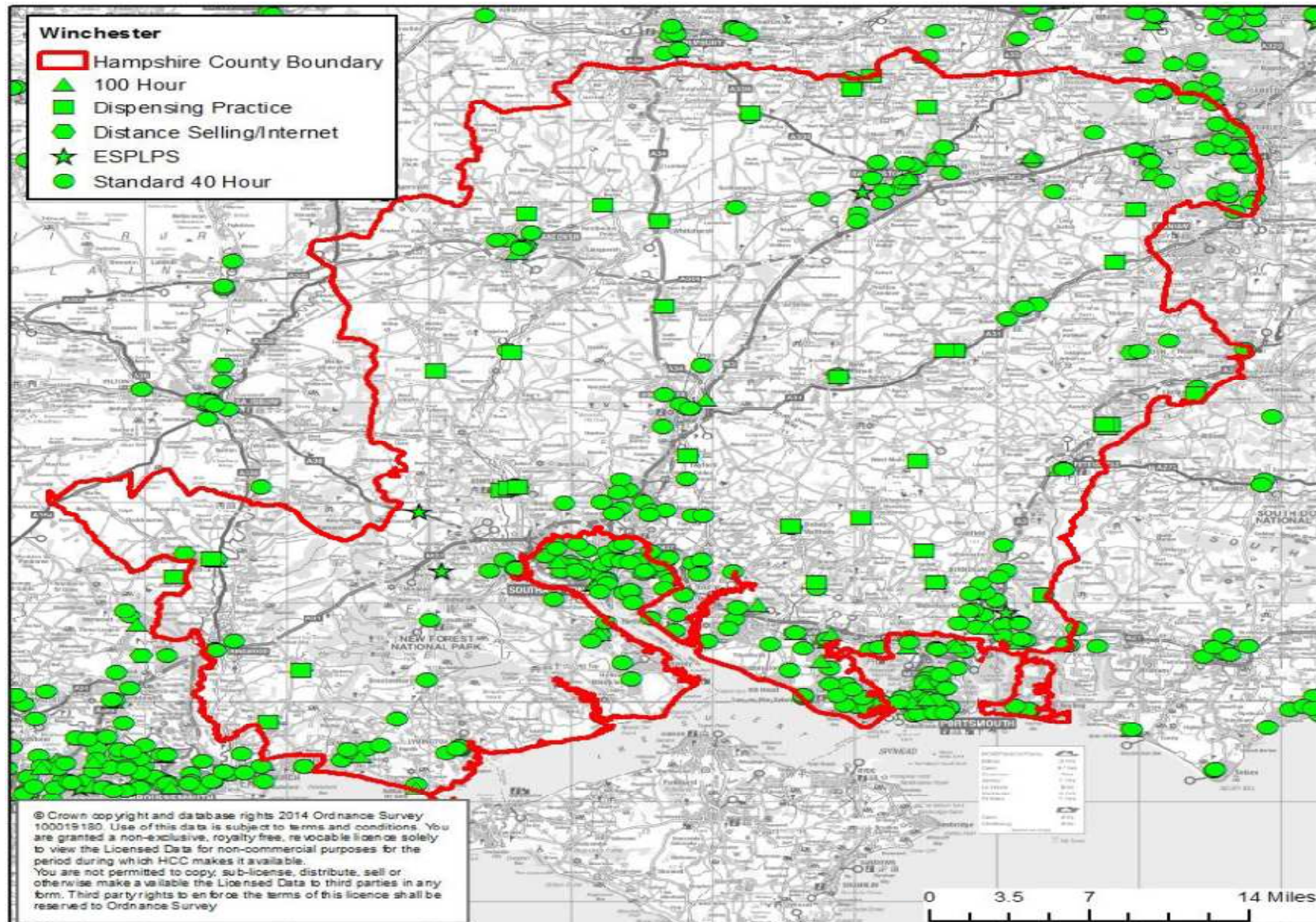
Berks\_PNA\_Apr14\_v1.wor 15/05/2014 Sid Beauchant BHFT

Reproduced from OS data by permission of Ordnance Survey, on behalf of the Controller of Her Majesty's Stationery Office (Licence No. OSKWFG1110), NAVTEQ data by permission of NAVTEQ Corporation Licence No. NVMM0611, NVMM0612) GeoPlan data by permission of Geoplan (Licence No. GPKW9912) © Crown Copyright - 2014 All rights reserved

Essential - no gap in service - no new pharmacies recommended  
Local commissioned - similar pattern of local additional services described for long term conditions, and self care - additionally reading and slough infectious diseases



# Hampshire PNA



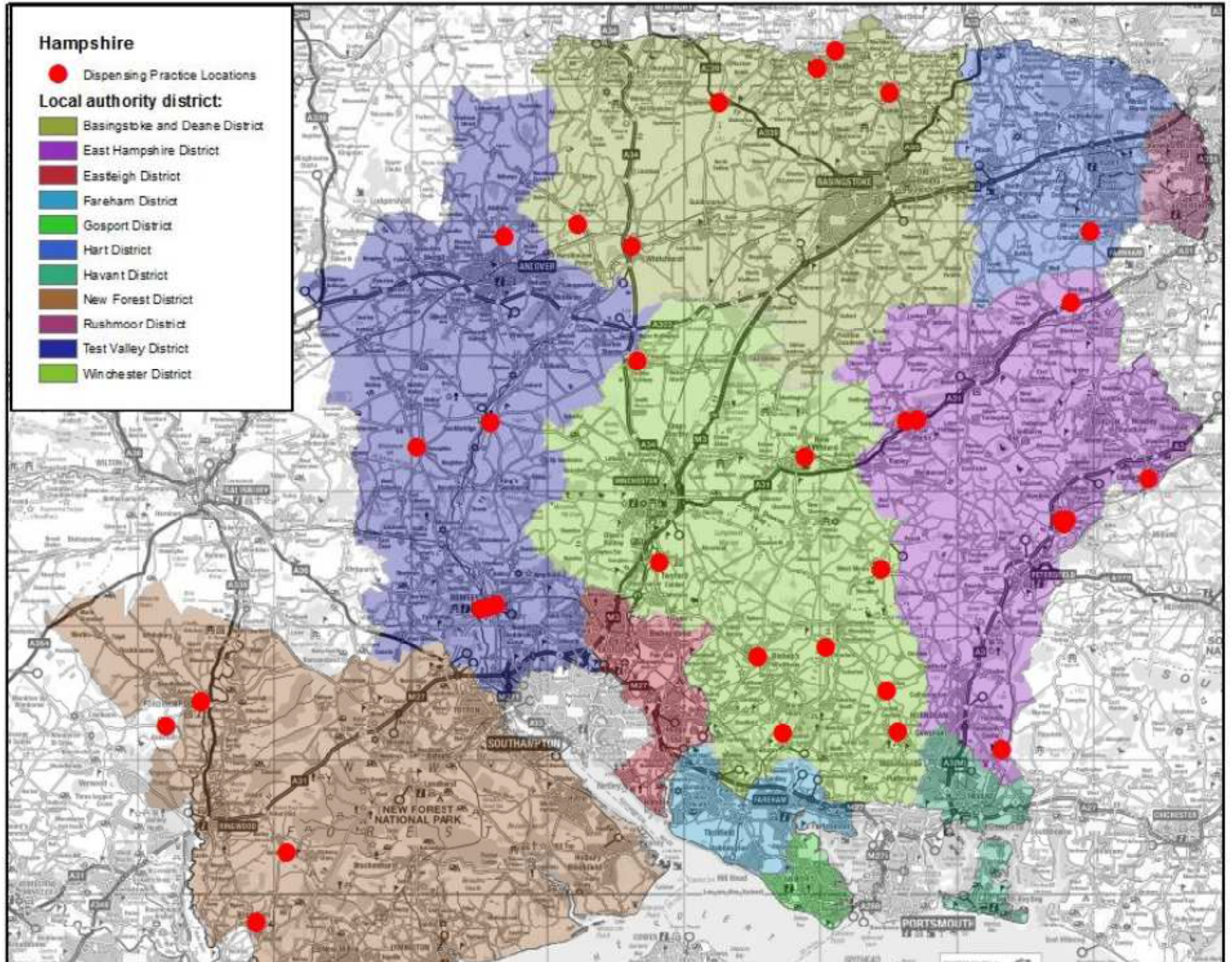


## Hampshire

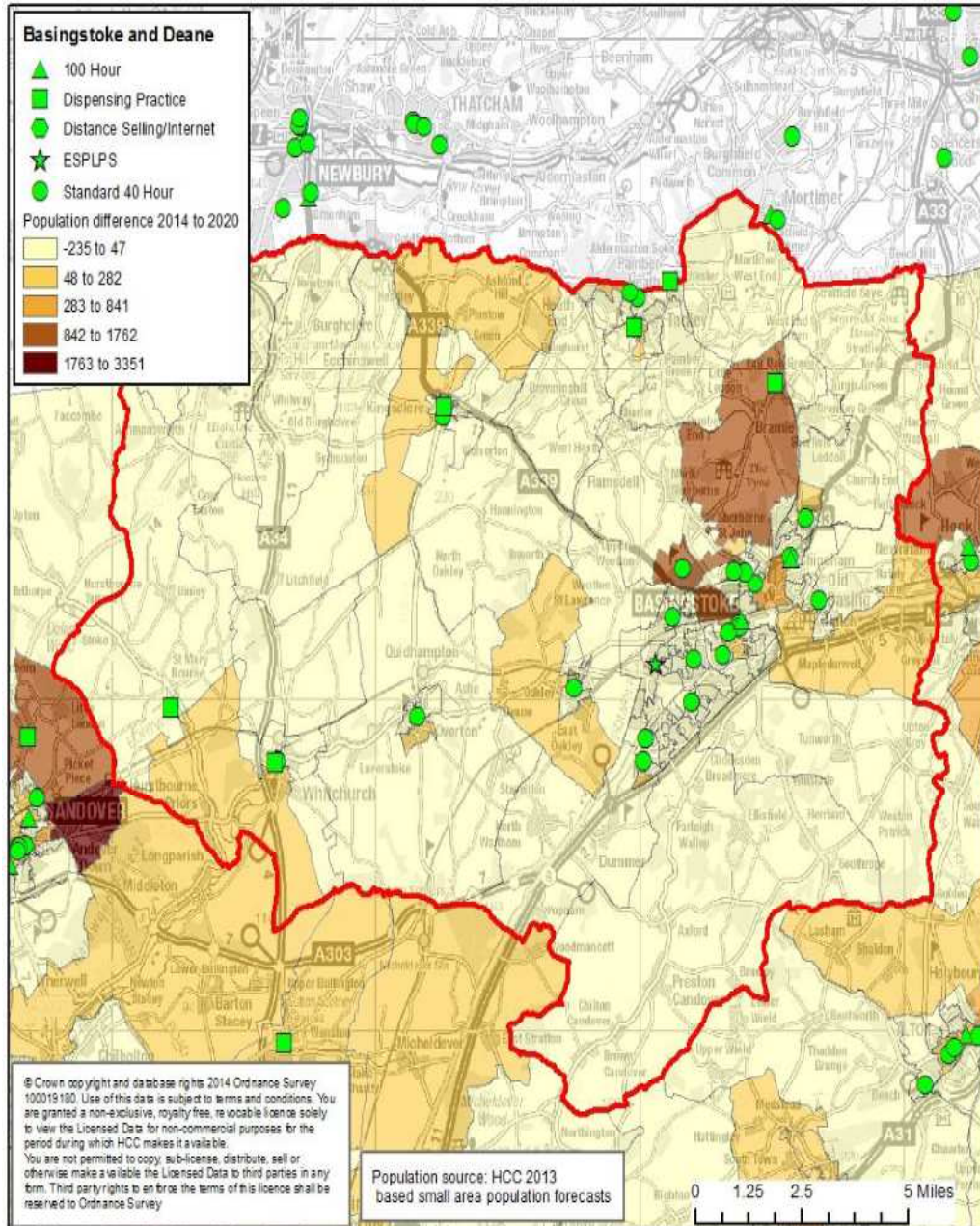
● Dispensing Practice Locations

### Local authority district:

- Basingstoke and Deane District
- East Hampshire District
- Eastleigh District
- Fareham District
- Gosport District
- Hart District
- Havant District
- New Forest District
- Rushmoor District
- Test Valley District
- Winchester District







Within Basingstoke and Deane the 168,000 population is slightly younger than the Hampshire population. Deprivation is lower than average

There are 27 community Pharmacies, including one 100 hour pharmacy and an essential small pharmacy.

68% population within 5 miles of pharmacy

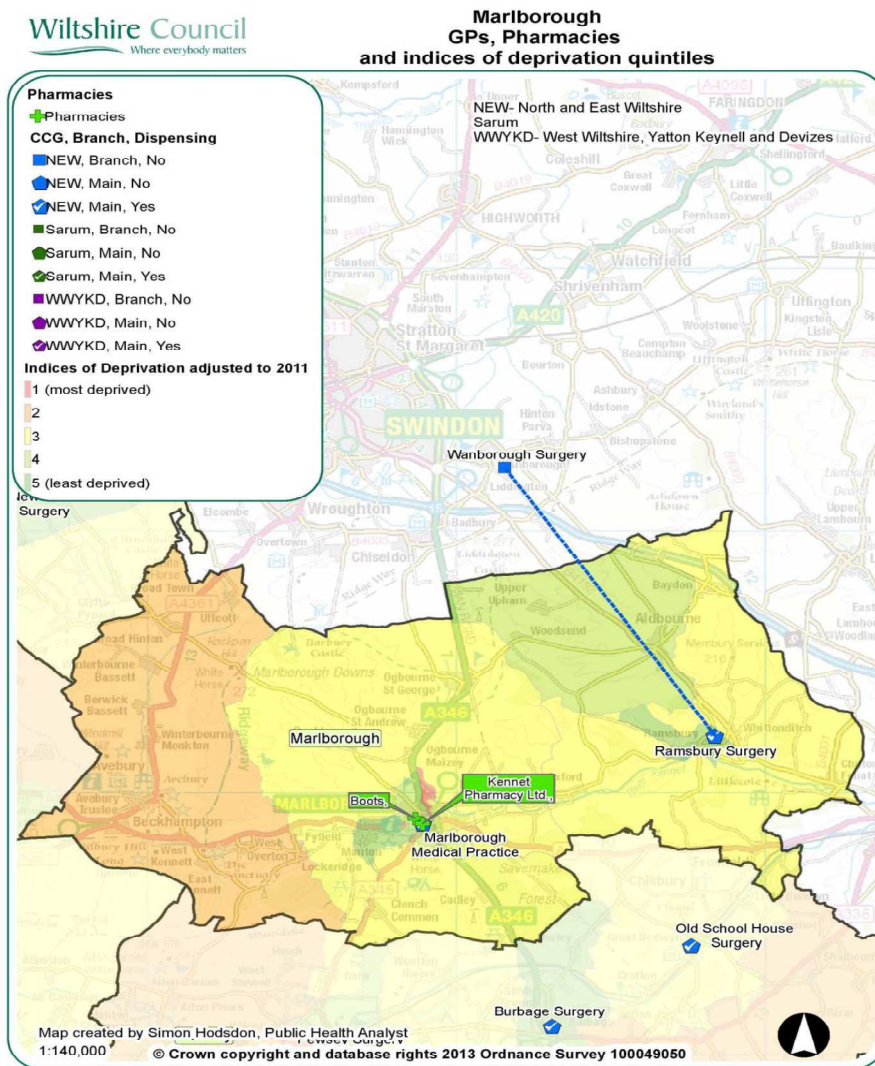
Good provision of pharmacy

# Hampshire Recommendations

- Further work is desired to confirm that the delivery services are safe and effective along with an understanding of the scope (i.e. what can be delivered) and standards of these delivery services operating
- The need for Essential Small Pharmacies close to standard pharmacies should be reviewed to ensure the most effective and cost effective pharmaceutical provision in line with the population need
- This is a gap in for translation provision as there is no formal translation service for patients. This should be considered.
- The Healthy living pharmacy service will need clear on going specification and regular evaluation of outcomes to ensure effectiveness of services
- A review of the uptake and quality of the MUR and NMS service locally should be undertaken to ensure best use of this service by patients with Long Term Conditions



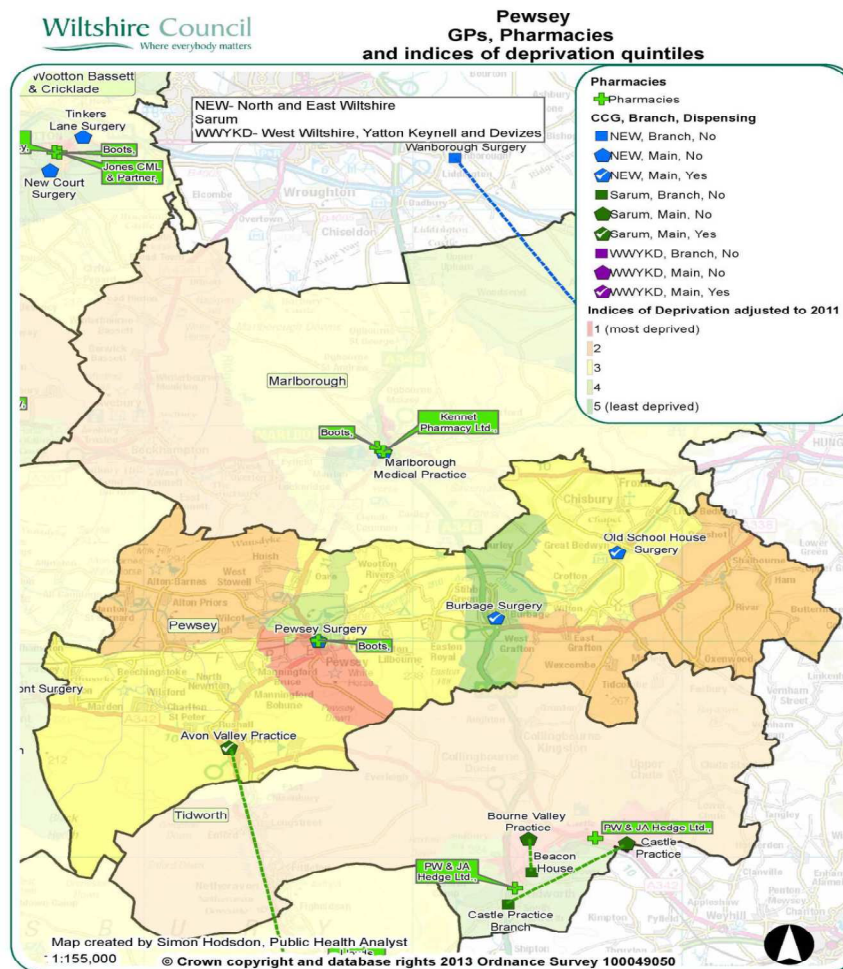
# Wiltshire PNA



Wiltshire has a total of 74 community pharmacies

21 Dispensing General Practices

Sufficient - looking to explore new local commissioned services in line with needs



# Oxford PNA

- Unavailable at this time - will be updated



# Summary

- Essential - no new pharmacies
- Advanced - increase roles of advanced services to support LTCs
- Local - self care, sign posting, long term conditions support
- Expanded role